



WESTCARB Regional Partnership

Sacramento Valley Geology and Citizen Green Well at King Island, California

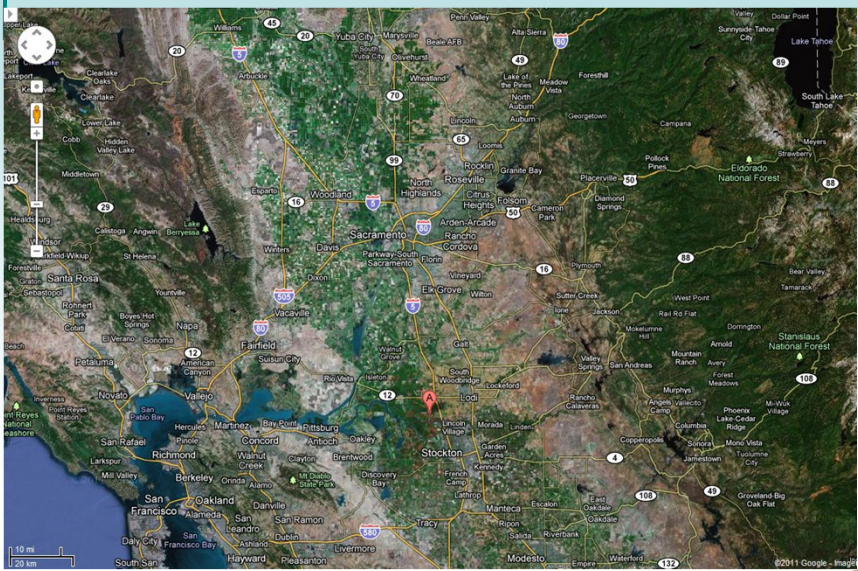
John Henry Beyer, Ph.D.
Program Manager, Geophysicist
510-486-7954, jhbeyer@lbl.gov



Lawrence Berkeley National Laboratory
Earth Sciences Division
One Cyclotron Road, MS 90-1116
Berkeley, CA 94720

WESTCARB Annual Business Meeting
Lodi, California
October 24–26, 2011

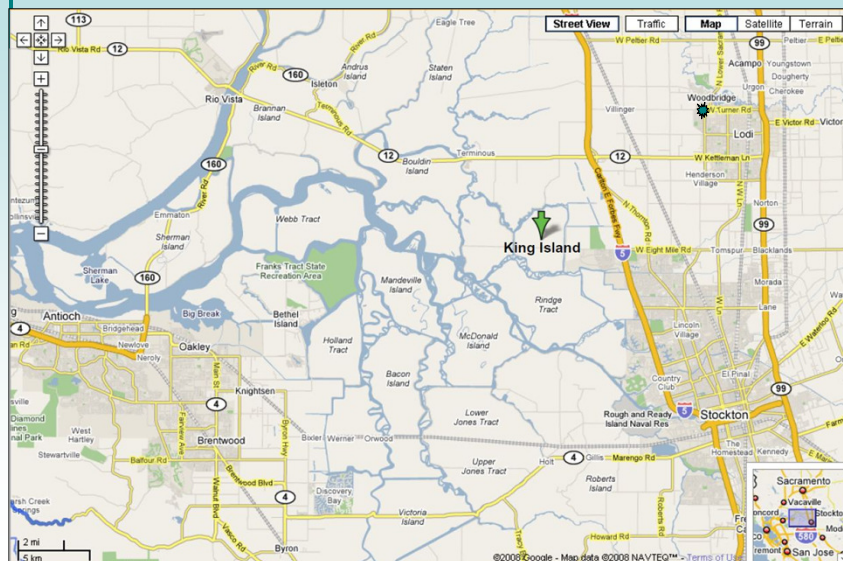
1

WESTCARB's Geologic Characterization Well, Located on King Island in the Southern Sacramento Basin



2

King Island Location in the Sacramento River Delta



WEST COAST REGIONAL CARBON SEQUESTRATION PARTNERSHIP

3



Workover rig preparing the King Island 1-28 well for re-entry to drill the deviated Citizen Green well (Sept. 1, 2011)

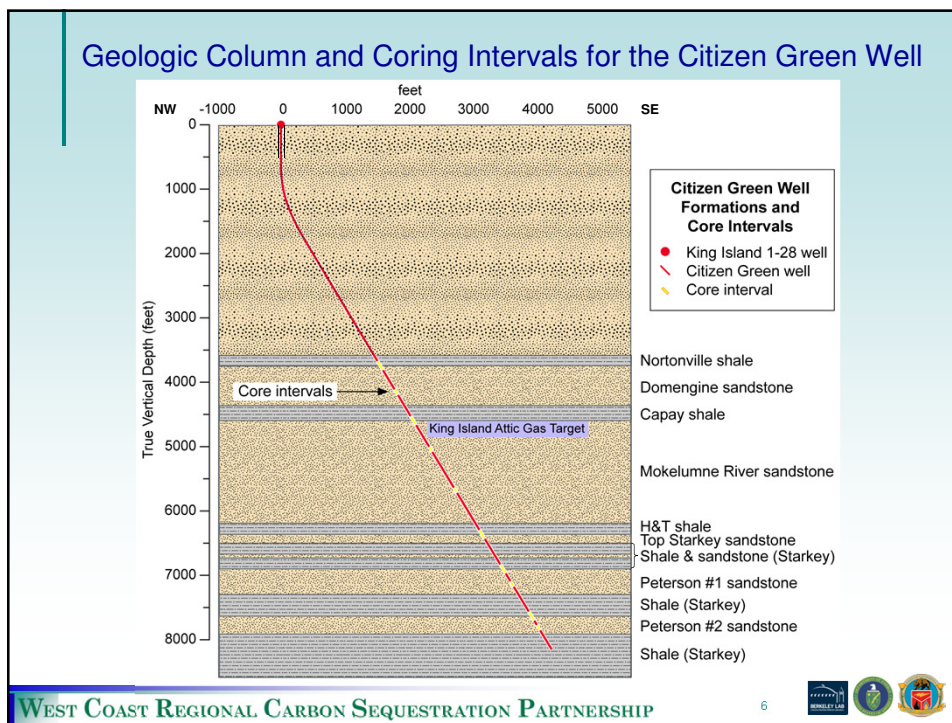
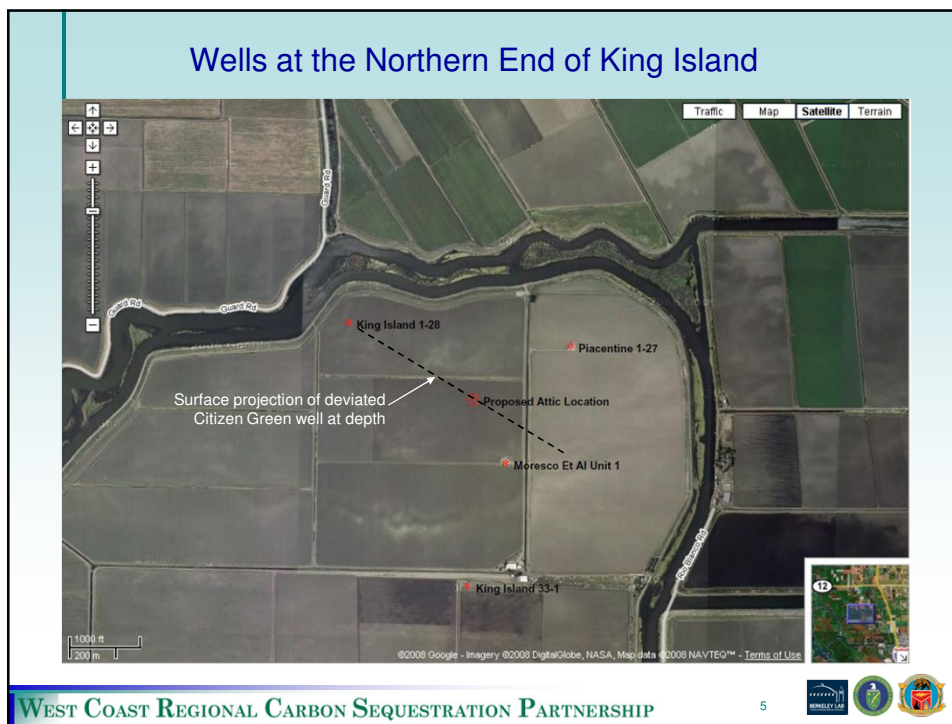


Photo: John Henry Beyer

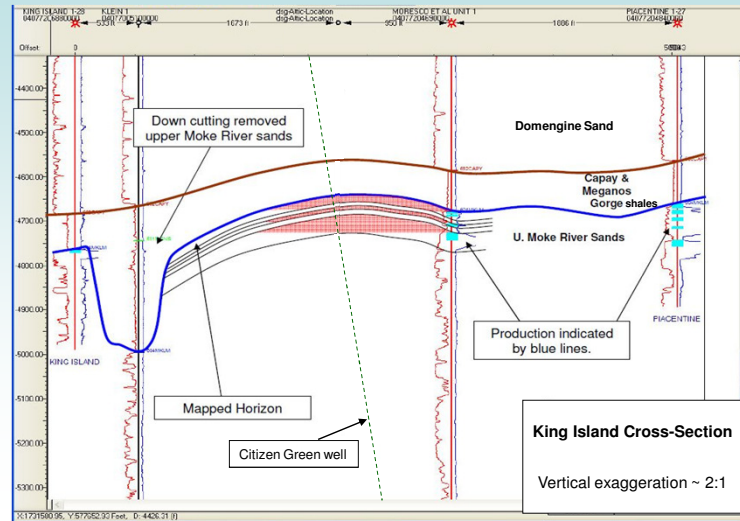
WEST COAST REGIONAL CARBON SEQUESTRATION PARTNERSHIP

4





Interpreted Cross-section of Upper Mokelumne River Sandstone based on 3D seismic and well log data



WEST COAST REGIONAL CARBON SEQUESTRATION PARTNERSHIP

7



Panel Presentations and Discussion: Northern California Geologic Characterization Research

- Hydrologic simulation of multi-phase fluid flow
Curtis Oldenburg, Ph.D., Head, Geologic Carbon Sequestration Program, Hydrogeology Dept., LBNL
- Geochemistry
Mark Conrad, Ph.D., Department Head for Geochemistry, LBNL
- Sealing characteristics of shales
Jason Heath, Ph.D., Sandia National Laboratory
- Petrophysics – CO₂ floods, seismic, and electrical properties
Seiji Nakagawa, Ph.D., Geophysicist, Research Scientist, LBNL
- Pore- and nano-scale petrophysics
Jonathan Ajo-Franklin, Ph.D., Geophysicist, Research Scientist, LBNL
- Monitoring CO₂ injection with electromagnetic methods
John Beyer, Ph.D., Geophysicist, WESTCARB Program Manager, LBNL

Looking forward to collaboration with the California State University at Bakersfield

Dirk Baron, Ph.D., Geochemist, Hydrogeologist, CSUB Geology Dept Chair

Rob Negrini, Ph.D., Geophysicist, CSUB

Pat Mickler, Ph.D., Geologist, was at CSUB, now at UT Austin working with Sue Hovorka

Core samples will be stored at the CSUB California Well Sample Repository

WEST COAST REGIONAL CARBON SEQUESTRATION PARTNERSHIP

8

