


**WEST
COAST
REGIONAL
CARBON
SEQUESTRATION
PARTNERSHIP**
westcarb.org


WESTCARB Annual Business Meeting

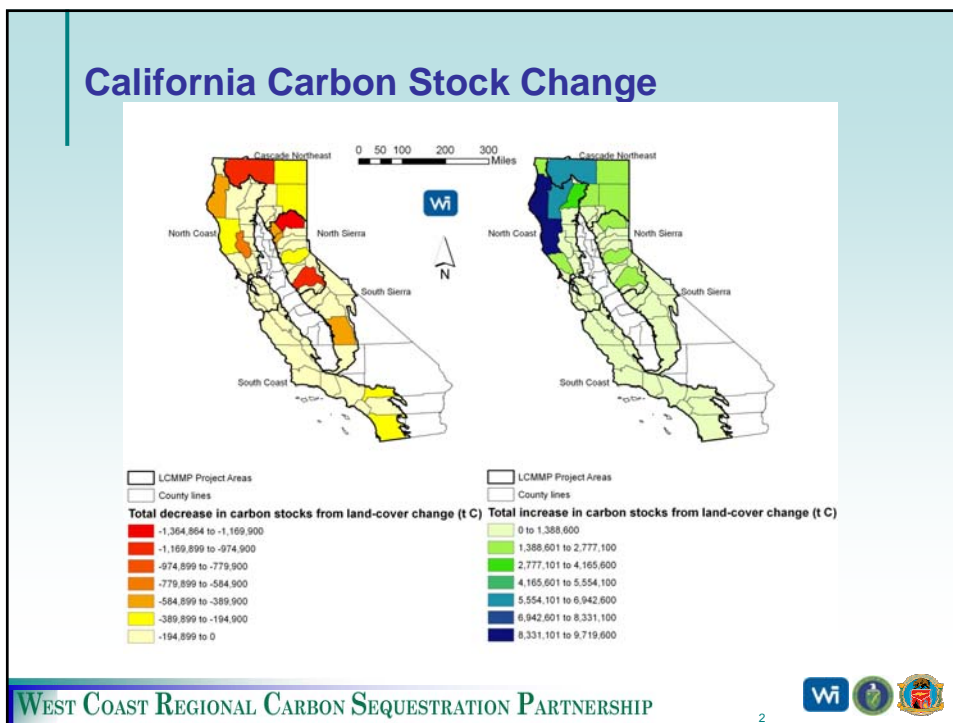
Regional Characterization Overview

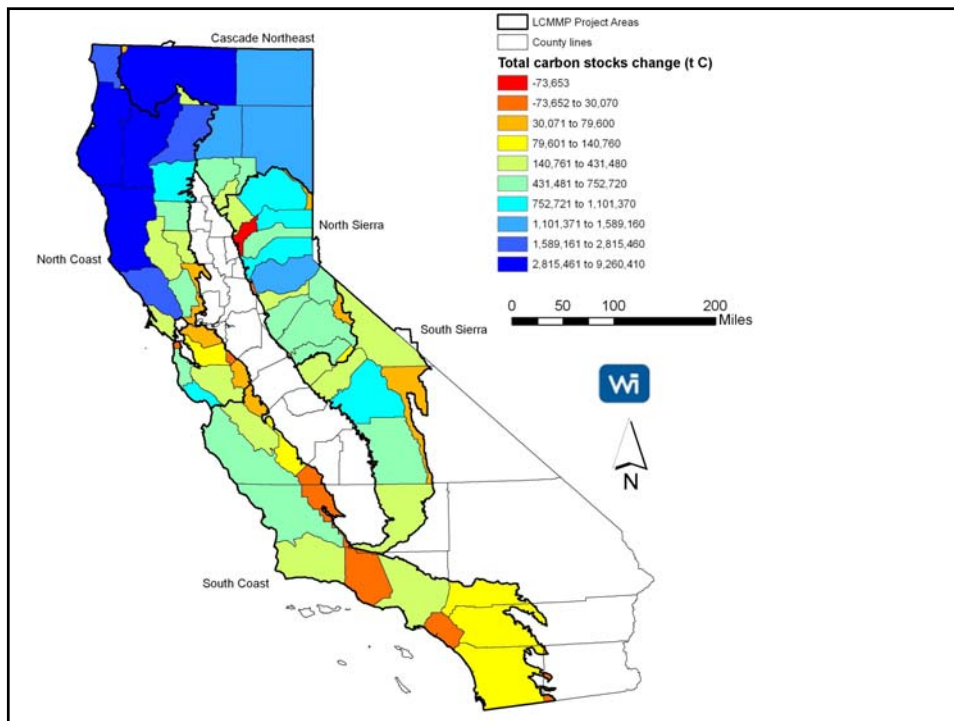
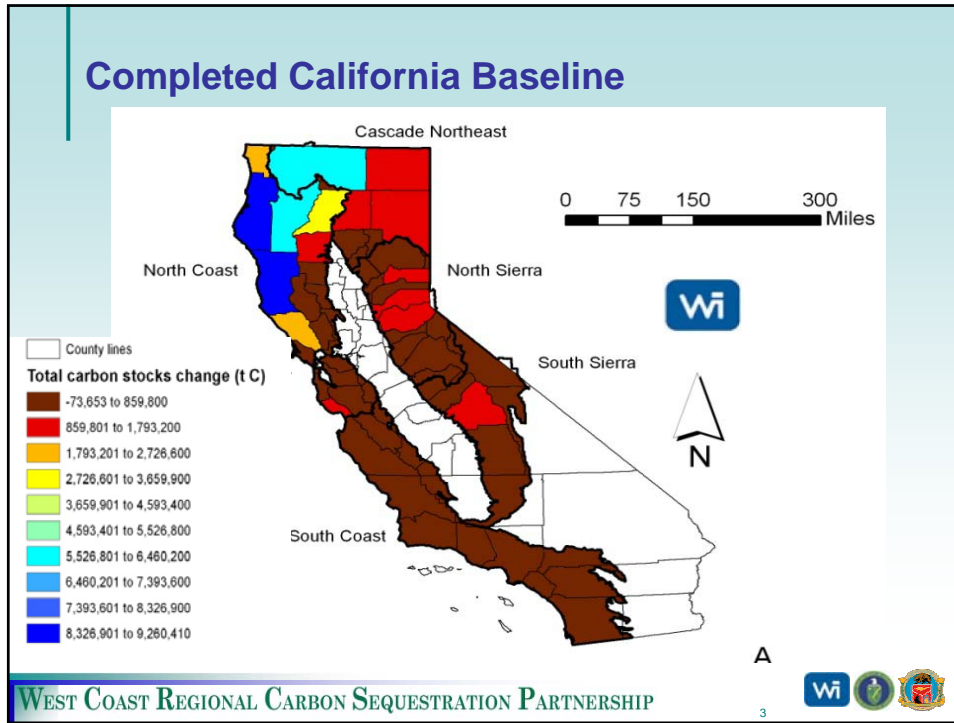
Katie Goslee
WESTCARB Terrestrial Project Manager
Winrock International
kgoslee@winrock.org



Scottsdale, AZ
September 15–17, 2009







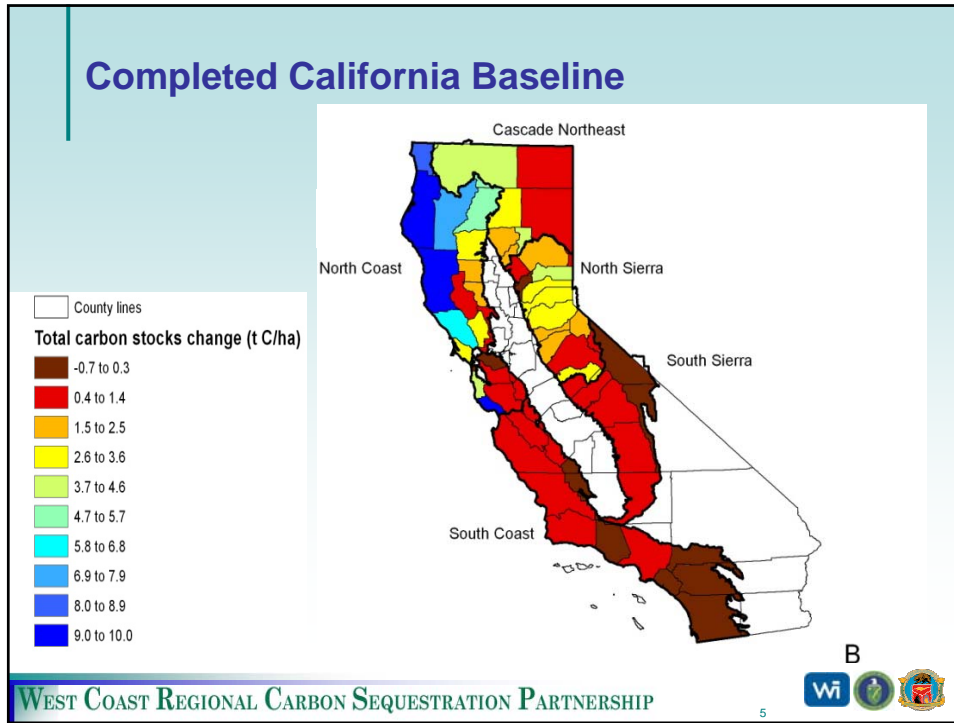
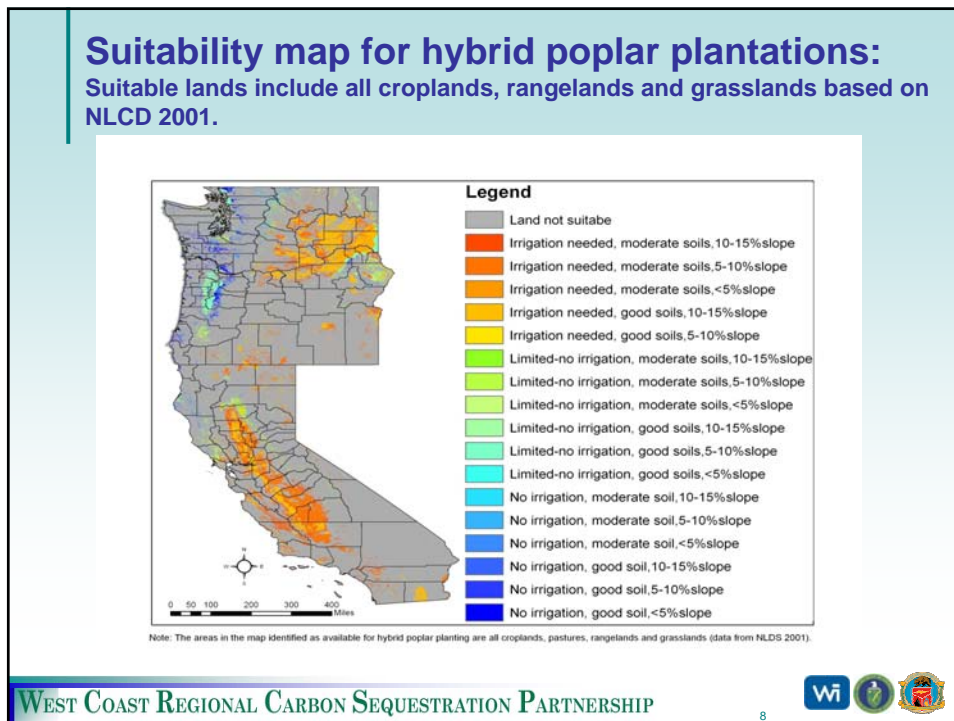
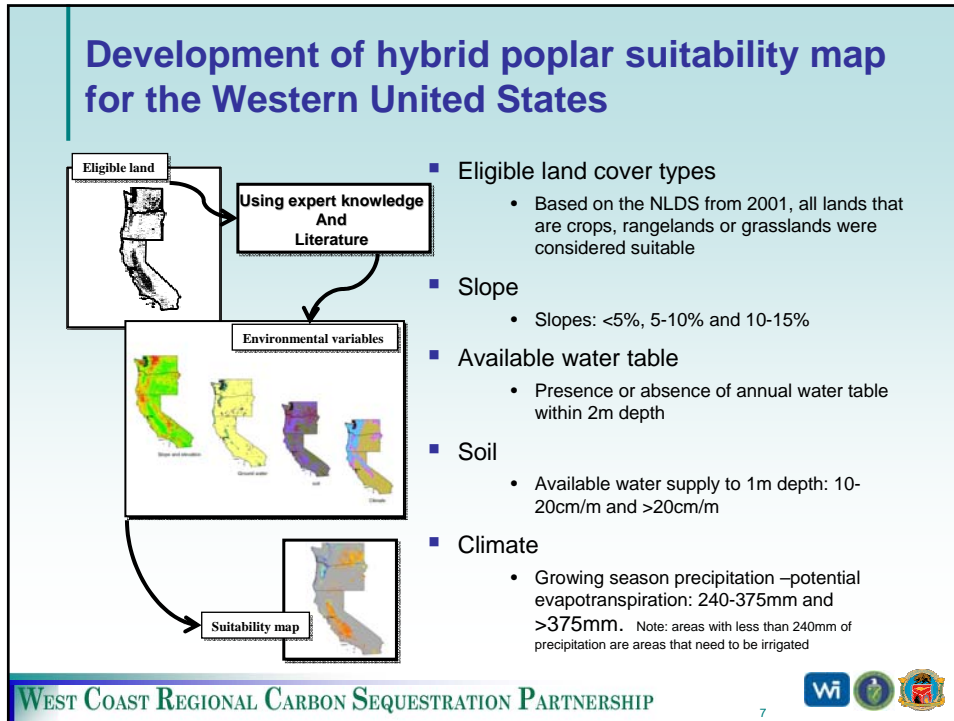


Table S-2. Emissions and Removals by Forests and Rangelands by Region

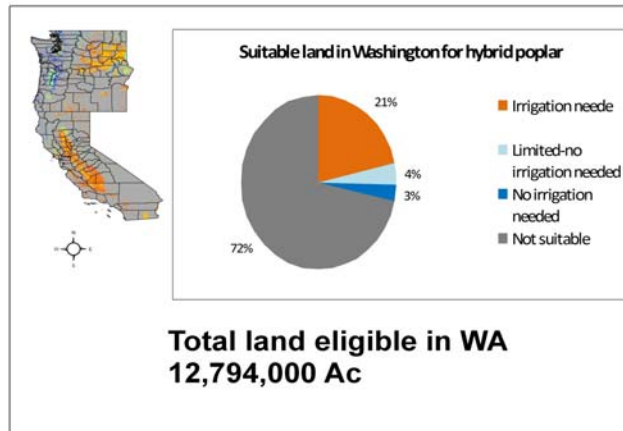
| MMTCO ₂ eq/yr | FORESTS | | RANGELANDS | |
|--------------------------|-------------|--------------|-------------|-------------|
| | Emissions | Removals | Emissions | Removals |
| North Coast | 1.39 | 15.16 | 0.07 | 0.54 |
| Cascade Northeast | 0.88 | 5.44 | 0.08 | 0.45 |
| North Sierra | 1.49 | 4.74 | 0.12 | 0.22 |
| South Sierra | 0.22 | 1.10 | 0.05 | 0.47 |
| South Coast | 0.11 | 0.66 | 0.30 | 0.89 |
| TOTAL | 4.09 | 27.10 | 0.63 | 2.57 |

WEST COAST REGIONAL CARBON SEQUESTRATION PARTNERSHIP

6

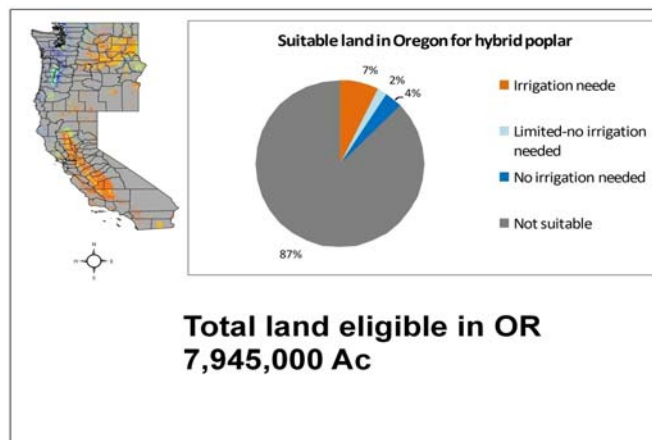


Washington State suitability results

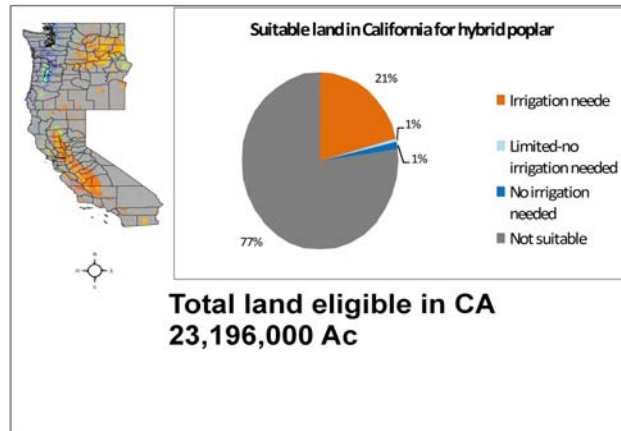


Note: The areas in the map identified as available for hybrid poplar planting are all croplands, pastures, rangelands and grasslands (data from NLDG 2001).

Oregon State suitability results



California State suitability results

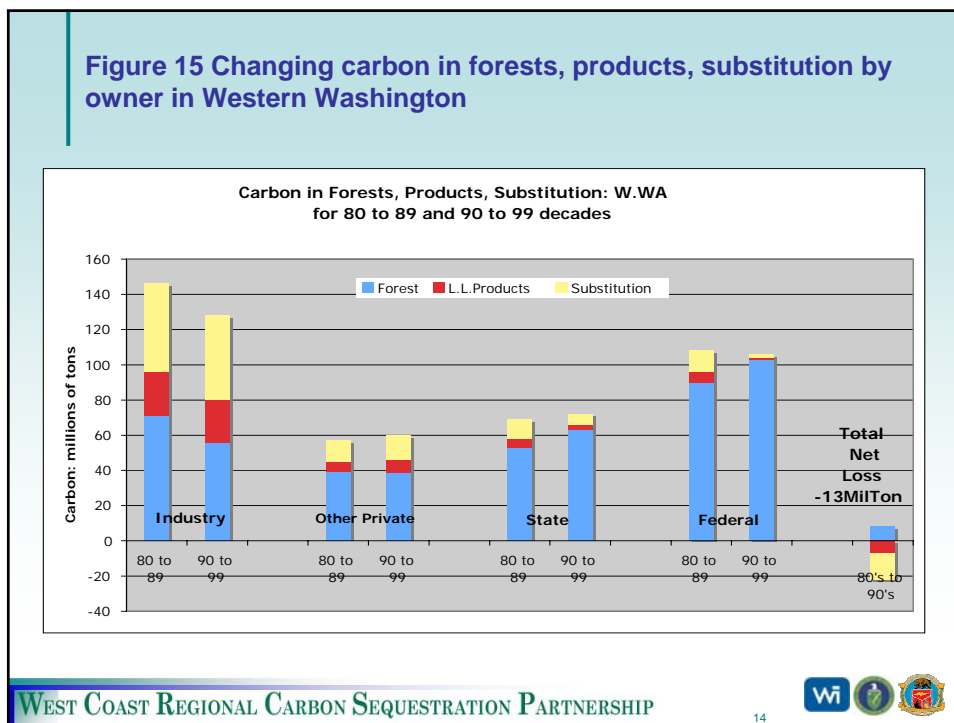


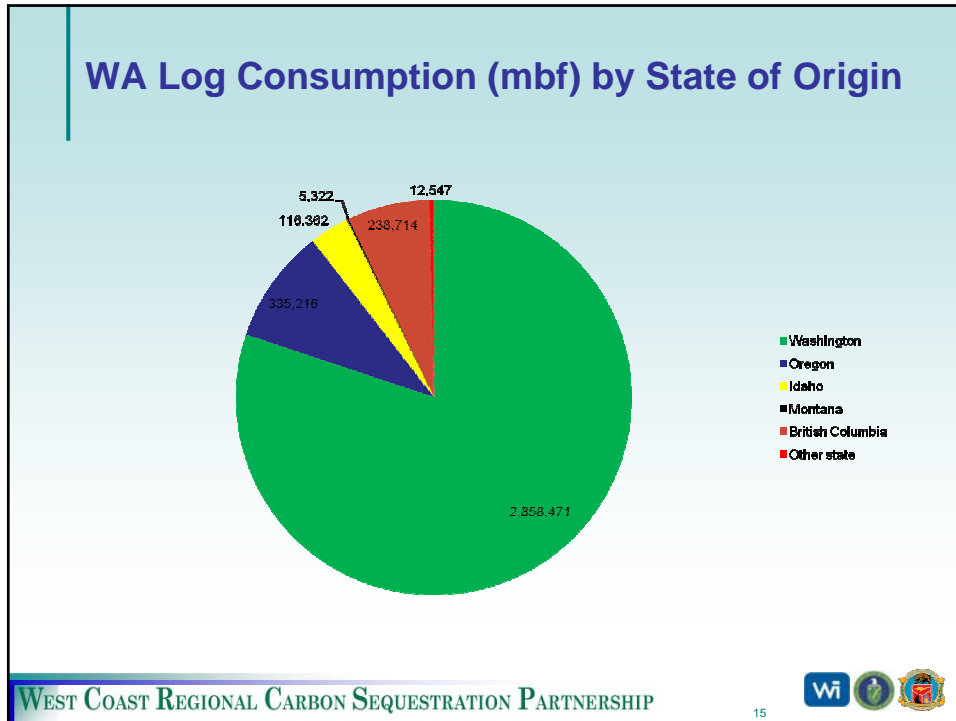
Washington State: Carbon footprint of timber supplies

- Impacts of forest management, forest type, transport distance
- Product origin and miles travelled
- Relative carbon footprint



Source: www.nnrg.org/about





Contact info

Katie Goslee
Winrock International
(510) 845-0968
kgoslee@winrock.org

WEST COAST REGIONAL CARBON SEQUESTRATION PARTNERSHIP

16